



GigaDuct - Fibre Raceway System

Horizontal Straight Duct

Application/Product Description

Horizontal straight duct is used to support straight runs of optical fibre cable. GigaDuct is easily joined together using a combination of elbows, T-junctions, intersections, reducers and couplers. A variety of mounting options are available to support different installation environments.

Features and Benefits:

- Supplied with cover or without cover
- Segregates fibre optic cable from other media to provide flexibility for future additions or changes
- Fully encloses cables to keep out dirt and dust as the fibre is routed through different areas of the data centre
- Protects cables by maintaining proper bend radius, preventing micro bends and macro bends that degrade performance
- Maintains attractive aesthetics by enclosing cables throughout the facility

Technical Specifications:

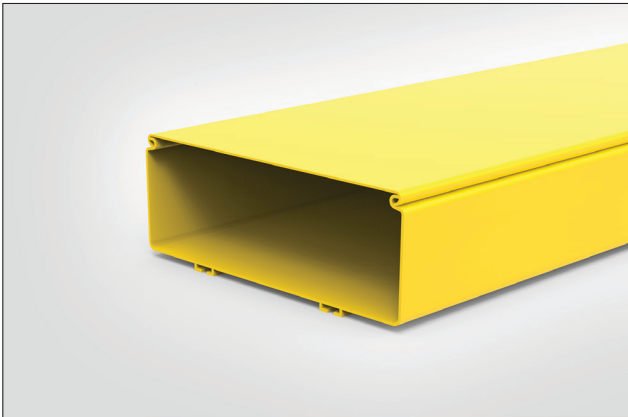
**Product Type:** Straight Duct

**Colour:** Yellow

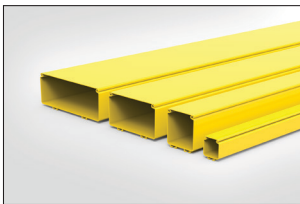
**Material:** Halogen-free

**Material Standards:**

- EN 61249-2-21, IEC 61249-2-21: Non-halogenated Material
- EN 60695-11-10, IEC 60695-11-10: Fire hazard testing
- UL94/V0 plastic flame-retardant
- Directive 2015/65/EU RoHS Compliant
- EC 1907/2006 REACH Compliant
- Suitable for riser and general-purpose applications



300x100mm horizontal straight duct.



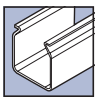
Variety of sizes available.

**Performance Standards:**

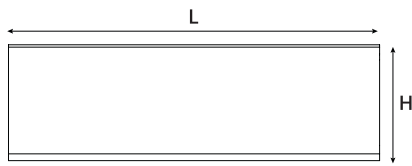
- EN 62368-1, IEC 62368-1: Safety Standard
- ANSI/TIA-942-B, Telecommunications Infrastructure Standard for Data Centres
- ANSI/TIA-569-B, Commercial Building Standard for Telecommunications Pathways and Spaces
- ANSI/UL 2024, Cable Routing Assemblies and Communications Raceways
- CAN/ULC-S143, Standard Method of Fire Tests for Non-Metallic Electrical and Optical Fibre Cable Raceway Systems
- NFPA 70 National Electrical Code (NEC)
- CSA C22.1 Canadian Electrical Code Part 1

PART CODE	Cover	DUCT SIZE	Width (W)	Height (H)	Length (L)	UNS
LG-D1DX18-YL	YES	50	57	63.5	1800	181-00417
LG-D1CX18-YL		100	105	113		181-00416
LG-D1BX18-YL		200	207	113		181-00414
LG-D1AX18-YL		300	307	113		181-00412
LG-D1DX18-YL-N	NO	50	57	55.5	1800	855-05036
LG-D1CX18-YL-N		100	105	106		855-05037
LG-D1BX18-YL-N		200	207	105		855-05038
LG-D1AX18-YL-N		300	307	106		855-05039

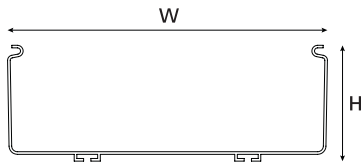
All measurements are in mm unless otherwise stated.



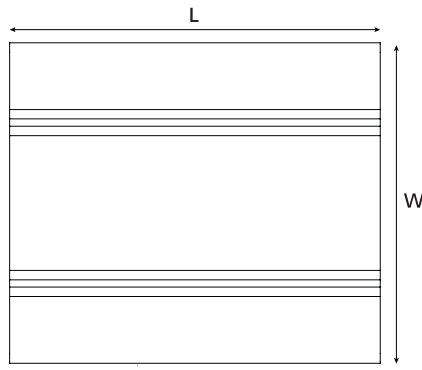
## Technical Diagrams:



Side View

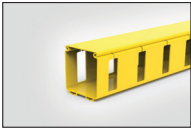


Front View



Bottom View

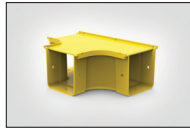
## Associated Products



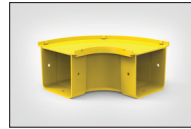
**Slotted Duct**  
50x50mm and  
100x100mm



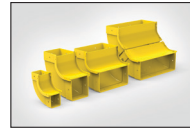
**Tool-free Coupler**  
Easy, tool free  
connection to duct



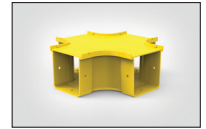
**T-Junctions**  
Horizontal or vertical



**Horizontal Elbows**  
90° or 45° angles



**Vertical Elbows**  
90° or 45° angles



**Intersections**  
Straight and reducer