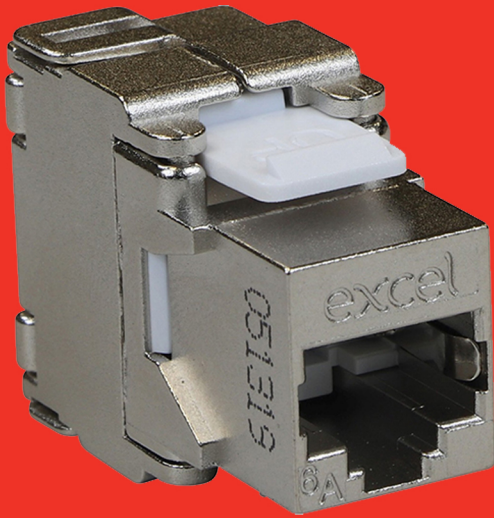




## Excel Cat6A FTP Screened Toolless Keystone Jacks Data Sheet



- ✓ Suitable for mounting in a range of housings from patch panels, faceplates and shutters to sub floor boxes and work area distribution enclosures.
- ✓ The socket itself is housed in a high quality zinc die cast housing which opens at the rear in a butterfly manner to reveal the IDC termination points.
- ✓ Once the conductors of the cable are fed into a management cap the process is completed by snapping the 'butterfly wings' together with minimal, but firm pressure.

- ✓ Suitable for 10 Gigabit, 10GBase-T, Ethernet applications.
- ✓ Toolless termination design.
- ✓ 360 degree shielding protects against alien crosstalk.
- ✓ Suitable for installation in 37mm back box with bevelled faceplate.

Product Code	Excel Code	Product Description	Price*
5523009	100-180	Excel Cat6A FTP Screened Toolless Keystone Jack	£3.40

\*Prices excluding VAT

### Excel Cat6A U/FTP S-Foil LSZH Dca 500m Cable Reel

- ✓ Designed and manufactured to meet and exceed the ISO, CENELEC and TIA standards.
- ✓ Delivers Class FA link and channel performance supporting all applications detailed and proposed within standards.

